

POLISHING OF **UDDEHOLM** MOULD STEEL



© UDDEHOLMS AB

No part of this publication may be reproduced or transmitted for commercial purposes without permission of the copyright holder.

This information is based on our present state of knowledge and is intended to provide general notes on our products and their uses. It should not therefore be construed as a warranty of specific properties of the products described or a warranty for fitness for a particular purpose.

Classified according to EU Directive 1999/45/EC
For further information see our "Material Safety Data Sheets".

Edition 7, 03.2021



CONTENTS

Why strive for a high surface finish	4
Factors that affect the surface finish	4
Surface preparation of tool steels	6
Guidelines	7
Polishing problems can be solved	10
Measuring surface roughness and quality	11

WHY STRIVE FOR A HIGH SURFACE FINISH?

Plastic and metallic components are manufactured with various surface finishes all from shiny and glossy to functional surfaces of different appearances. In this brochure we will inform about the factors that have the biggest impact on the polishability of tool steels and give recommendations on how to obtain the required surface finish on moulds, dies, punches and metallic components/parts. The most common defects are shown in the Uddeholm brochure "Defect Chart and Hints for High Gloss Polishing of Steel Surfaces"

Depending on the application and requirements we can distinguish between two types of surface finishing methods; high gloss polishing and functional polishing.

HIGH GLOSS POLISHING

Tools for plastic moulding do require a high surface finish especially when extreme transparency and/or high gloss are aimed for. In such cases it is of utmost importance to choose a proper tool material and establish a suitable surface preparation technique. To achieve a reflective surface with mirror finish the preparation process must involve several grinding and diamond polishing steps and these have to be performed in a clean workplace. The use of proper working tools facilitates the process a lot.

High surface finish reduces the risk of local corrosion and fracture or cracking due to temporary over loading or pure fatigue.

The tool surface finish may also have an impact on productivity as in the case of injection moulding. Here, the release forces of the plastic component from the tool steel surface are dependant on the adhesion properties of the polymer to the mould surface. An improved smoothness of the tool surface may lead to higher release forces and eventually to sticking phenomena, which partly can be

overcome by an optimal choice of tool steel and preparation strategy.

FUNCTIONAL POLISHING

Most cold work applications do not need high gloss polished tool surfaces, but it is always advantageous to create functional surfaces for a prolonged tool life. In forming operations where lubricants are involved a preparation strategy may consist of removing larger peak formations on the surface and preserving a controlled depth of valleys as lubrication pockets, which then will contribute to a reduced friction during forming. However, it is always important to consider the final tool steel surface quality in relation to the application. If a high quality surface coating is going to be applied, then it is always recommended to perform high gloss polishing of the tool surface before the coating process.

THE POLISHER IS EXTREMELY IMPORTANT

The results from the tests that have been carried out during the work with this brochure shows that the skill, experience and technique of the polisher plays an extremely important role in achieving the desired surface finish.

FACTORS THAT AFFECT THE SURFACE FINISH

Tool steels are used in many application fields within plastic moulding, cold and hot working and as engineering components. For proper functionality, but also to minimize the manufacturing cost of the tool or component it is vital to specify the required surface finish on the engineering drawing. Especially in applications of plastic moulding it is important to have access to material data relating to surface finish capabilities. However, it should be noted that the surface finish of the end product is not only determined by the tool steel and the applied surface preparation process, but also the application process itself has a big impact on the result. Polymers have different material characteristics at plastic moulding and this will definitely influence the final surface finish, as illustrated in Figures 1 and 2.

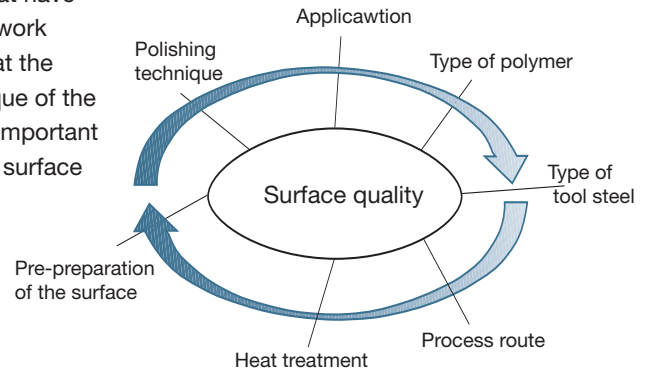


Fig.1. A number of factors have influence on the surface finish of the final end product.

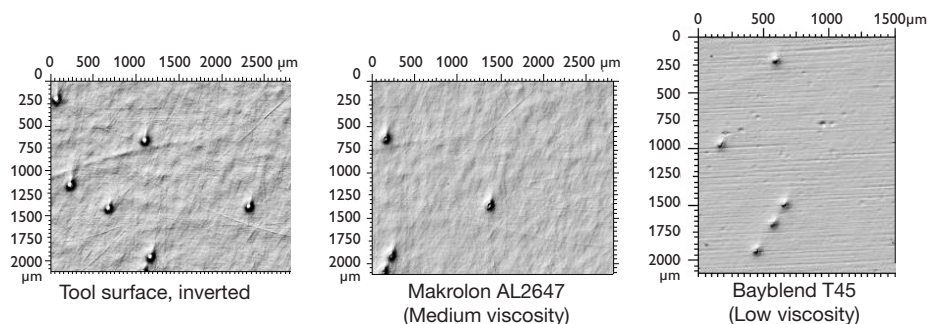


Fig 2. The photos show differently holes/pits on tool surface replicated on the plastic plaque due to different material characteristics in different polymers. Fewer peaks is detected on the Makrolon plaque whereas the Bayblend plaque had visible peaks all over the surface.

TOOL STEEL QUALITY

PROCESS ROUTES FOR TOOL STEELS

Tool steels are found in various alloy combinations to fit usage in different application fields. Common manufacturing process routes are conventional ingot casting (IC), continuous casting (CC), electro slag remelting (ESR), vacuum arc remelting (VAR) and powder metallurgy (PM). Remelting processes and PM processes produce materials of higher homogeneity with a low non-metallic inclusion content, whereas ingot cast materials normally have a higher degree of segregation patterns and also contain more non-metallic inclusions.

RECOMMENDATIONS

To produce highly reflective and glossy surfaces ESR-remelted or PM steels are to be used. However, conventional ingot cast steels can give a very good surface finish, if both steel manufacturing and polishing are performed according to a good practice.

DEFECTS IN TOOL STEELS

Various types of defects emanating from the production process may be found in the steel. During steelmaking non-metallic inclusions are formed as a result of the deoxidation process. Other sources are entrapped exogenous material from refractory in the ladle or at casting. A fast solidification rate is normally beneficial by giving less time for inclusions and particles to grow and reducing segregation patterns.

In the special remelting processes such as VAR and ESR the cast ingot are remelted under controlled conditions. Non-metallic oxide inclusions are effectively removed from the steel and sulphides are reduced substantially via the basic working slag in the ESR-process altogether giving tool steels of high cleanliness.

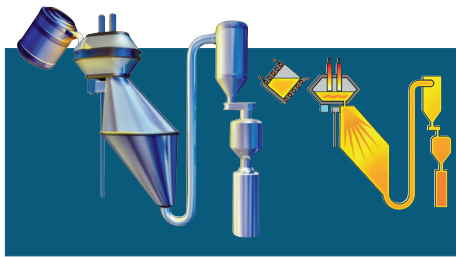
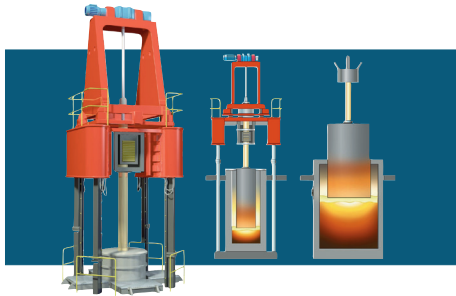
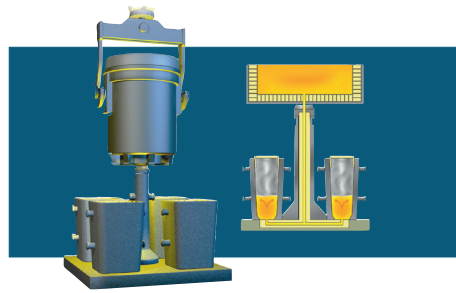


Fig 3. Process routes for tool steels and example of steel grades produced by the different routes.

CONVENTIONAL PROCESS

UDDEHOLM STEEL GRADES:

Calmax
Rigor
Impax Supreme
Nimax
Ramax HH
Orvar 2 Microdized
Corrax

ELECTROSLAG REMELTING PROCESS

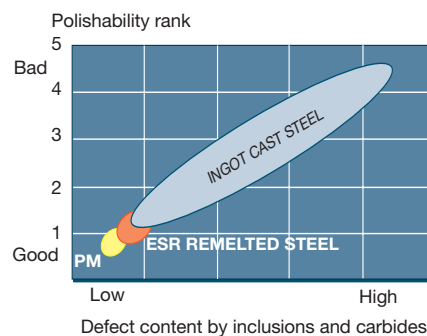
UDDEHOLM STEEL GRADES:

Stavax ESR
Mirrax ESR
Mirrax 40
Orvar Supreme
Vidar 1 ESR
Unimax
Dievar
Tyrax ESR

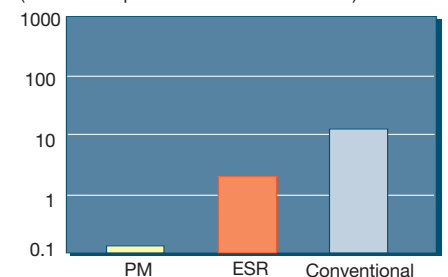
POWDER METALLURGY PROCESS

UDDEHOLM STEEL GRADES:

Vanadis 4 Extra SuperClean
Vanadis 8 SuperClean
Elmax SuperClean



Total number of particles per mm²*
(oxides + sulphides + carbides + nitrides)



*oxides and sulphides >3 µm carbides and nitrides >4 µm

Fig. 4. A low defect content is beneficial from polishing point of view.

HEAT TREATMENT

Heat treatment can affect polishability in many ways. Decarburization or recarburization of the surface during heat treatment can produce variations in hardness, resulting in polishing difficulties.

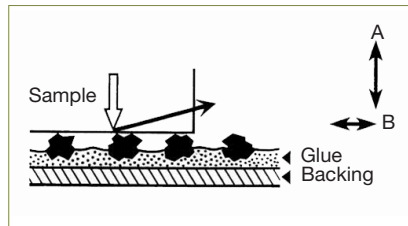
In order to avoid this it is recommended that the hardening is carried out in vacuum furnaces or furnaces with controlled protective gas atmosphere or salt baths. It is also of importance to secure that the time at austenitizing temperature is not too long and the quenching speed is not too slow to avoid grain growth and grain boundary precipitations.

SURFACE PREPARATION OF TOOL STEELS

The following four terms are commonly used when it comes to surface preparation of tool steels. The essential characteristics of these methods are explained below.

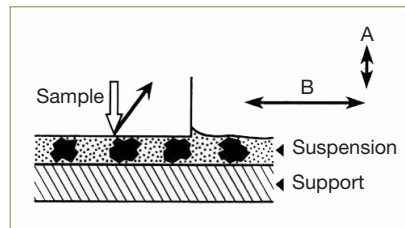
GRINDING

The abrasive particles are firmly bonded to a carrier such as grinding paper, stones and the discs.



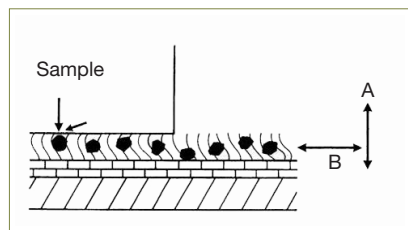
LAPPING

The abrasive particles are not bonded but move freely between the carrier and the work piece.



POLISHING

The abrasives are more or less fixed in the carrier material and will cut and/or plough the surface.



BUFFING

The abrasives adhere loosely to a flexible carrier (soft disk made of cloth or hide). This step is considered among some polisher to be the last polishing step performed in order to obtain a mirror like surface.

MANUFACTURING OF INITIAL SURFACES

It should be emphasized that the grinding operation forms the basis for a rapid and successful polishing job. In grinding, the marks left by the rough-machining operation are eliminated and a metallurgically pure and geometrically correct surface is obtained.

The finishing preparation steps can be very time consuming and costly, but can be controlled to a certain extent by a proper manufacturing of the initial tool surface. Normally the starting surface is ground, milled or electro discharge machined (EDM). Typical initial surface roughness values, as R_a/R_z , are approximately 0.5/5 μm for the two former and 3/15 μm for an EDM surface. Recent developments in high speed machining has made it possible to produce surface finishes better than $R_a = 0.2 \mu\text{m}$ and by using the latest techniques in EDM the R_a falls below 0.07 μm . After EDM processing it is important to remove the heat affected layers by either a fine sparking and/or by grinding. If not doing so crack initiation may appear during tool use.

HINTS FOR GRINDING

OPERATION	SURFACE FINISH	
Ground	R_a 0.5 μm	R_z 5 μm
Milled	R_a 0.5 μm	R_z 5 μm
High speed machined	R_a 0.2 μm	R_z 1.5 μm
EDM	R_a 3.0 μm	R_z 15 μm

Table 1. Typical initial surface roughness values R_a and R_z .

RECOMMENDATIONS

To facilitate the finishing steps and to minimize the risk of loosing dimensional tolerances of the tool the initial surface finish should have a roughness value of maximum $R_a / R_z = 0.5/5 \mu\text{m}$. This will eliminate the need of using coarse grinding media in the first preparation step.

DESCRIPTION OF ABRASIVES

It is important that the abrasive fulfills requirements with respect to:

- hardness
- sharpness
- thermal resistance
- chemical stability

Today, the following five main groups of synthetic abrasives are used, fulfilling the above requirements to greater or lesser extents.

1. *Diamond* designation SD
2. *Aluminium oxide* designation A (SG)
3. *Silicon carbide* designation C
4. *Boron carbide* designation B₄C
5. *Cubic boron nitride* designation B

Abrasives have different application areas, depending on their particular characteristics, as shown partially in table 2 below.

ABRASIVE	HARDNESS KNOOP	THERMAL STABILITY IN AIR	
		°C	°F
Diamond	7 000	650	1200
Aluminium oxide	2 100	2000	3630
Silicon carbide	2 500	1200	2190
Boron carbide	2 900	2700	4890
CBN	4 700	1300	2550

Table 2.

1. *Diamond*

The hardest material known, has a sharp and angular structure. Fast material removal and the best possible planarity in combination with excellent surface finishes.

Distinguish between mono and polycrystalline diamonds. Mono-crystalline are best for lapping, since they are round and have many cutting edges. Natural gives better cuts while synthetic are harder, a mix is the best since it last longer.

2. *Aluminium oxide* (Al₂O₃)

Is relatively hard and has a sharp angular structure. It is often used during the last polishing step since it gives excellent and highly glossy surface finishes. Is relatively inexpensive.

3. *Silicon carbide* (SiC)

Has a needle like blocky structure. Used for rougher surface finishes.

4. *Boron carbide* (B₄C)

Is hard and has a blocky crystal structure. Fast material removal generating moderate surface finish.

5. *Cubic Boron Nitride* (CBN)

Is produced basically in the same way as synthetic diamond and is used when grinding hard materials like HSS and hardened high carbide tool steels.

- spend more time on the coarse steps before changing to the finer steps
- polishing with diamond compound from 15 µm down to 1 µm grain, use as short time as possible
- always be careful when using soft carriers (felt, brushes, cloths) as there is a risk of "orange peel" formation on the polished surface

A reflective surface starts to appear at Ra/Rz approaching 0.1/1 µm, and the final surface roughness Ra/Rz should be less than 0.005/0.04 µm for a high gloss polished surface.

RECOMMENDATIONS

Material removal in hardened steels is more consistent and repeatable when diamond products are used. Precision hand tools incorporating linear movement of the working tools, grinding files and polishing stones, give a less troublesome preparation process. A good practice is to work perpendicular to the grooves in all preparation steps and to verify with optical examination that all scratches from the previous step have been completely removed. Note, that heavy cold worked material beneath the surface needs to be removed for a perfect end result.

FINE GRINDING

Fine grinding should smooth the surface before the diamond polishing stage commences. Working tools and compound media are built up around different kinds of abrasives which consists of small and hard particles with sharp edges and irregular shapes.

PRACTICAL HINTS FOR GRINDING

It should be emphasized that the grinding operation forms the basis for a rapid and successful polishing job. In grinding the marks left by the rough machining operation are removed and a clean and geometrically correct surface is obtained. The practical hints mentioned below apply to both mechanical grinding and manual stoning.

- To avoid adding heat and stress into the surface, do not use too much pressure and use plenty of coolant.
- Use only clean and free-cutting grinding tools with soft stones for hard surfaces.
- It is very important that the work-piece and the hands of the polisher are carefully cleaned between each change of grain size. This is done to prevent coarse particles and dust from being carried over to the

GUIDELINES

No general recipe exists for all types of steels, but the experience and ability to adjust the polishing technique to every single mould and to minor variations in the surface is of crucial importance for the end result. As a general guideline the procedure for high gloss polishing shown below can be adopted i.e.;

- starting from a ground surface where the roughness Ra/Rz should be maximum 0.5/5 µm
- use stones/grinding papers for the first steps, stepwise grinding to 1200 Mesh

next grinding step.

- When changing to the next finer grain size, it is recommended that the grinding direction be changed to 45°. Cross-grinding is very simple, but extremely effective. It increases stock removal and it makes it easier to detect scratches from the previous steps and improve the dimensional accuracy. Figure 5 A–C.
- Select the sequence of movements so that all surface segments are processed for an equally long period. With a rotating grinding disc there will be a risk that there will be less stock removal on the edge than in the centre of the surface.

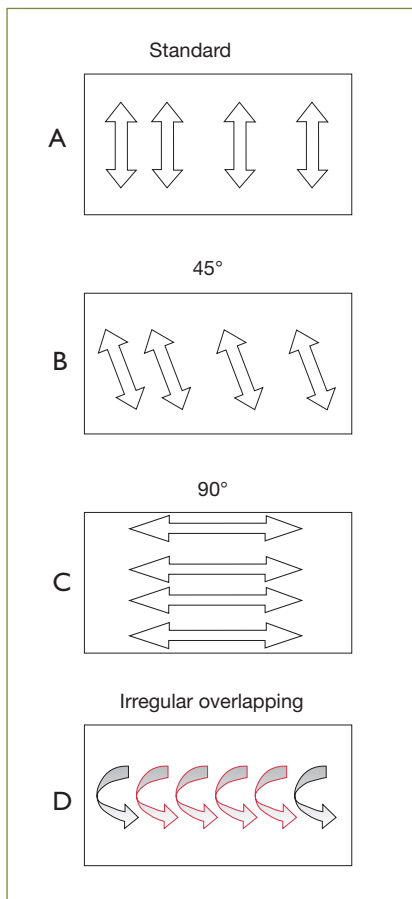


Fig. 5. Grinding directions.

PRACTICAL HINTS FOR POLISHING

Above all, cleanliness in every step of the polishing operation is of such importance that it cannot be over-emphasized.

- Each polishing tool should be used for only one paste grade and kept in dust proof containers.
- Paste should be applied to the polishing tool in manual polishing, while in machine polishing the paste should be applied to the work-piece.
- Polishing pressure should be adjusted to the hardness of the polishing tool and the grade of paste. For the finest grain sizes, the pressure should only be the weight of the polishing tool.
- Work with hard carriers for as many steps as possible and work for as short a period as possible with soft carriers.
- Polishing should start in the corners, edges and fillets but be careful with sharp corners and edges so they are not rounded off.

- Finish polishing step should, if possible, be carried out in the release directional of the moulded part.
- With softer carrier the abrasive is able to penetrate deeper into the carrier. This will result in that the surface will be finer for the same size of abrasive. See Figure 6 below.

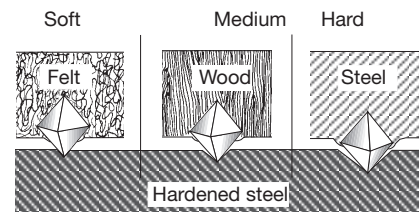


Fig. 6. The hardness of the carrier affects the exposure of the diamond grains and the removal rate.

TYPICAL POLISHING SEQUENCES

The choice of grinding and polishing sequences are determined by the experience of the operator and the equipment he/she has at his/her disposal. The properties of the tool material can also influence the sequence.

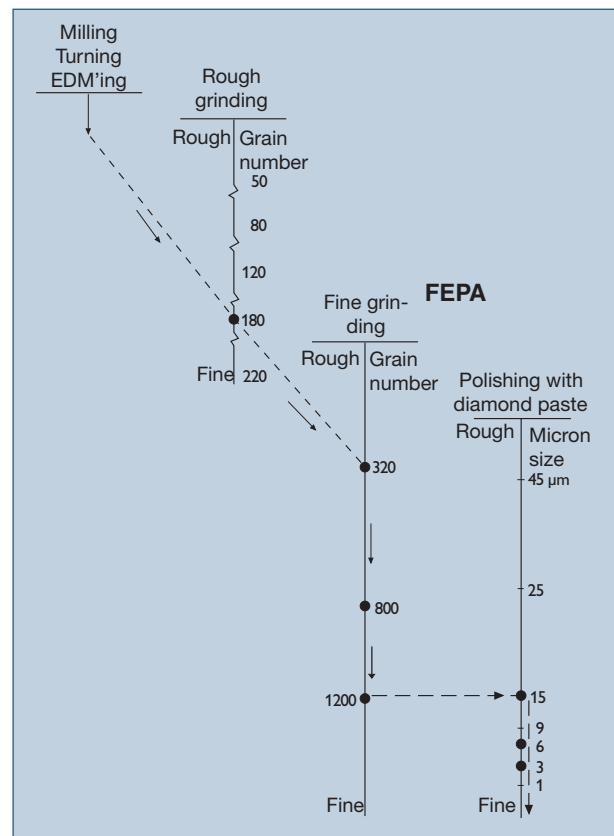


Fig. 7. This figure shows example of how the polishing sequence can be selected.

EXAMPLE OF DIFFERENT POLISHING STRATEGIES AT HIGH GLOSS POLISHING

All polishers have their own procedures for high gloss polishing. The data, in Tables 3–5, reflects that

different manual polishing strategies can be adopted to reach the same final surface finish by using rigorous and well proven working procedures. The achieved surface finish is lower than Ra 0.01 µm

STEP	TECHNIQUE	TYPE OF TOOL		LUBRICATION
1	Hand-held unit	Stone	320	Dielectric oil
2	Hand-held unit	Stone	400	Dielectric oil
3	Hand-held unit	Stone	600	Dielectric oil
4	Hand-held unit	Paper	400	Dry
5	Hand-held unit	Paper	600	Dry
6	Hand-held unit	Paper	800	Dielectric oil
7	Hand-held unit (linear)	Brass 5 x 5 mm	DP 9 µm	Dielectric oil
8	Hand-held unit (linear)	Wood 5 x 5 mm	DP 9 µm	Dielectric oil
9	Hand-held unit (linear)	Wood 5 x 5 mm	DP 6 µm	Polishing oil
10	Hand-held unit (rotational)	Hard felt 10 mm	DP 3 µm	Polishing oil
11	Hand-held unit	Piece of cotton wool	DP 1 µm	Polishing oil

Table 3.

The tables 3 and 4 show examples of specific step-by-step information regarding high gloss polishing of Uddeholm Stavax ESR and Uddeholm Unimax.

STEP	TECHNIQUE	TYPE OF TOOL		LUBRICATION
1	Ground			
2	Hand-held unit	SiC paper	K320	Dry
3	Hand-held unit	SiC paper	K800	Dry
4	Hand-held unit	SiC paper	K1500	Dry
5	Hand-held unit	Acryl	D fluid 6 µm	Polishing oil
6	Hand-held unit	Acryl	D fluid 3 µm	Polishing oil
7	Hand-held unit	Cotton	D fluid 3 µm	Polishing oil

Table 4.

STEP	TECHNIQUE	TYPE OF TOOL		LUBRICATION
1	Reciprocating machine 9500 Rpm Amplitude movment 0.2 mm	Brass carrier Plastic carrier	DP W 15 µm	Polishing oil
2	Reciprocating machine 9500 Rpm Amplitude movment 0.2 mm	Brass carrier Plastic carrier	DP W 10 µm	Polishing oil
3	Reciprocating machine 9000 Rpm Amplitude movment 0.2 mm	Brass carrier Plastic carrier	DP W 5 µm	Polishing oil
4	Reciprocating machine 7500 Rpm Amplitude movment 0.2 mm	Brass carrier Plastic carrier	DP W 3 µm	Polishing oil
5	Turning tools	Wool blankets	DP W 1 µm	Polishing oil

Table 5.

Observe carefully, during the polishing steps, if any deep marks are visible in the polished surface. If this problem occur it is needed to immediately reduce the pressure, put on polishing oil or if more diamond paste needs to be added.

POLISHING PROBLEMS CAN BE SOLVED

The predominant problem in polishing is so-called “overpolishing”. This terminology is used when a polished surface gets worse the longer you polish it. There are basically two phenomena which can appear when a surface is overpolished: “orange peel” and “pitting” (pin holes). These problems often occur when changing from hard to a soft tool (felt/brush).

A material at higher hardness can better withstand a high polishing pressure compared with prehardened steel. Subsequently material with low hardness will become “over-polished” more easily.

ORANGE PEEL

The appearance of an irregular, rough surface, which is normally referred to as “orange peel”, might depend on different causes. The most common is polishing with high pressure and prolonged time during the last polishing steps. A material at high hardness is less sensitive to problems with “orange peel” compared to pre-hardened or soft annealed material.

- If a polished surface shows signs of an appearance like “orange peel”; stop polishing! There is no idea to increase the polishing pressure and continue to polish. Such a course of action will only result in a worse set of problems.
- Following steps are recommended to restore the surface. Remove the defective surface layer by regrinding it, by using the last grinding step prior to polishing. Use a lower pressure and shorter time during the polishing steps than what was used when the problems occurred.

PITTING

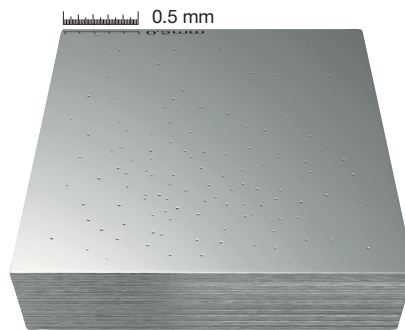
The very small pits (pin holes) which can occur in a polished surface generally result from non-metallic inclusions or hard carbides which have been torn out from the surface during the polishing process. Pitting can also be caused by hard particles embedded in a softer matrix. During polishing the matrix will be removed at a more rapid rate than the hard particles. Polishing will gradually “undermine” the hard particles until they are torn out of the material by further polishing. The problem is most often encountered when polishing with diamond paste grain size less than 10 µm and soft polishing tools (felt, brush).

If pitting occurs the following measures should be taken:

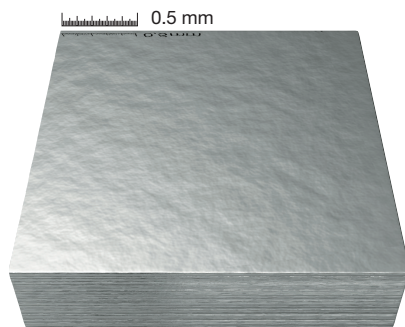
- regrind the surface carefully using the last grinding step prior to polishing
- use a hard coarse tool and repeat the polishing process

When using grain size 10 µm and smaller:

- the softest polishing tools should be avoided
- the polishing process should be carried out for the shortest possible time and under the lowest possible pressure



“Pitting”



“Orange peel”

MEASURING SURFACE ROUGHNESS AND QUALITY

Polished mould surfaces are traditionally estimated by the naked eye and/or measured by mechanical profilers for surface roughness, commonly described with the R_a , R_z and R_t values.

However, these methods are both subjective and uncertain compared to more advanced surface- and sub-surface measurement devices capable of measuring to fractions of nano-metres. The use of 3D-instrumentation with higher resolution provides more accurate surface measurements of moulds with complex geometries which in turn means that quantitative surface quality controls can be performed.

SURFACE ROUGHNESS ACC. TO DIN/ISO 1302			SURFACE ROUGHNESS ACC. TO SPI	
	ROUGHNESS R_a , μm	ROUGHNESS R_{max} , μm		ACHIEVED AFTER GRINDING/POLISHING WITH
N 1	0.025	0.1–0.3	A-1	3 μm Diamond Paste
N 2	0.05	0.3–0.7	A-2	6 μm Diamond Paste
N 3	0.1	0.75–1.25	A-3	15 μm Diamond Paste
N 4	0.2	1.5–2.5	B-1	600 Grit Paper
N 5	0.4	2–6	B-2	400 Grit Paper
N 6	0.8	6–10	B-3	320 Grit Paper
N 7	1.6	10–20	C-1	600 Grit Stone
N 8	3.2	20–40	C-2	400 Grit Stone
N 9	6.3	~60	C-3	320 Grit Stone
N 10	12.5	~125	D-1	600 Stone Prior to Dry Blast Glass Beads #11
N 11	25	~250	D-2	400 Stone Prior to Dry Blast #240 Aluminium oxide
N 12	50	~500	D-3	320 Stone Prior to Dry Blast #240 Aluminium oxide

Table 6. Approximate comparison between requested surface roughness measured by mechanical profilers and international standards.

SURFACE ASSESSMENT BY ROUGHNESS PARAMETERS

The benefit to measure surfaces is both the possibility to study them in the micro- and nano-scale, and a way to quantitatively evaluate them. But, there is a huge amount of available 2D- and 3D parameters (abbreviated R- and S-parameters, respectively), so how do you know which to use?

2D parameters, usually obtained by a mechanical profiler, can be used to quantify the surface quality in a limited extent. The most frequent used in practical work with moulds is the R_a -value describing the average height of the measured surface. However, it is a rather poor description of the mould surface since smaller defects and certain textures will be “averaged out” and/or undetected. See figure 8.

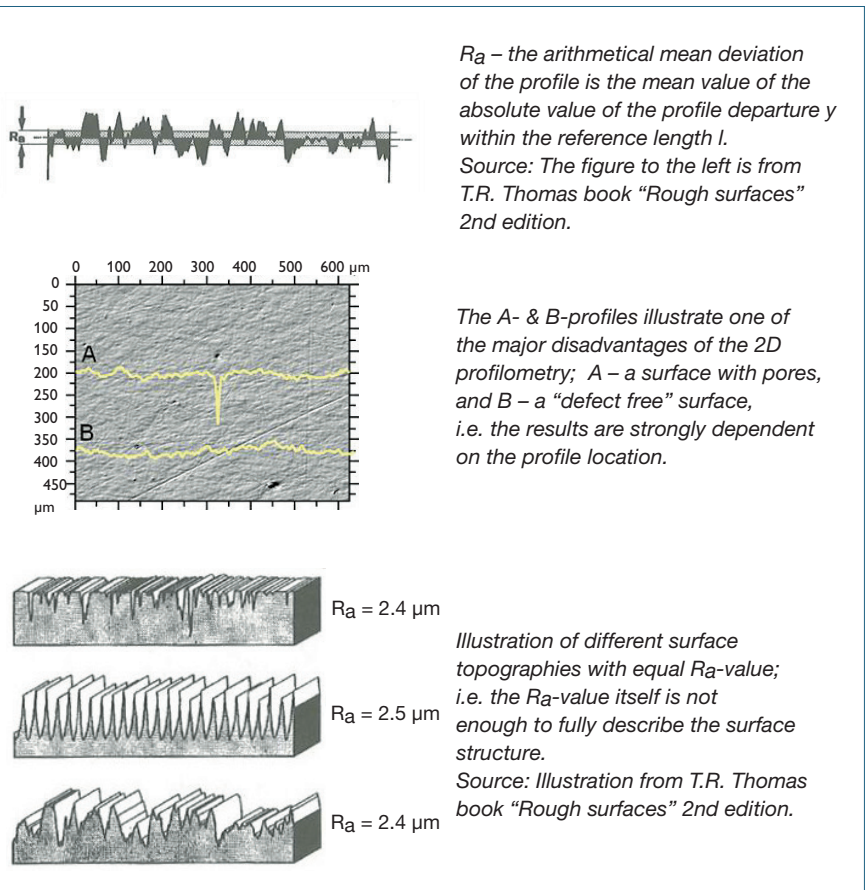
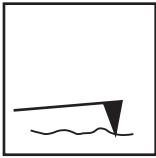


Fig. 8.

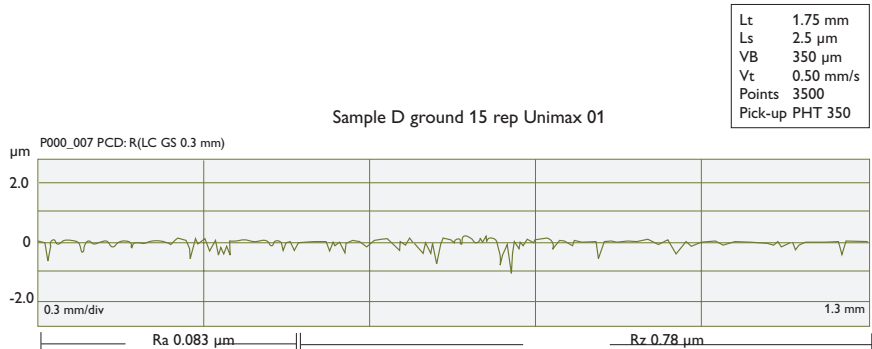
MEASUREMENT DEVICES AND ANALYSIS TECHNIQUES AVAILABLE TO QUANTIFY ENGINEERED SURFACE TOPOGRAPHIES

MECHANICAL PROFILER (STYLUS)



Typical output parameters are the R_a (arithmetic mean value of a profile), the R_z (mean peak to valley height), and

the R_{max} (or R_t , the maximum peak to valley height). Notice: most often R-values are filtered per default (connected to actual measurement length and cut-off).



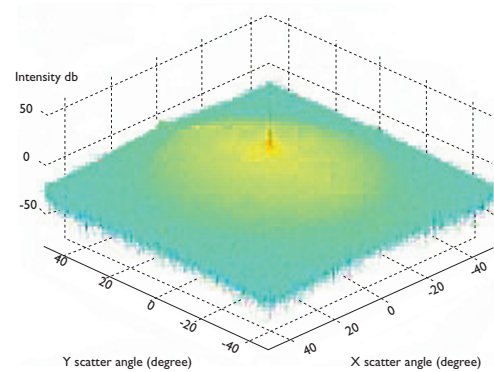
SCATTEROMETER (GLOSSMETER)



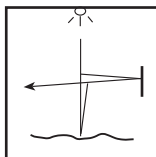
The surface is illuminated and the reflected/scattered light is detected. Simple glossmeters measure reflections in defined angles, whereas scatterometers include the total reflection.

Simple glossmeters measure reflections in defined angles, whereas scatterometers include the total reflection.

Scattering data need to be correlated to roughness data by verifications with other measurement devices. Typical output is e.g. an average rms-values, the ratio of the diffuse reflection or the reflection of light at a defined angle.



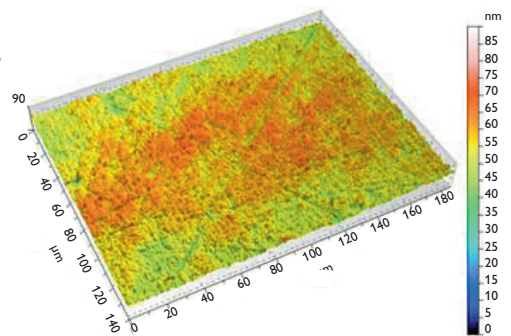
INTERFEROMETER



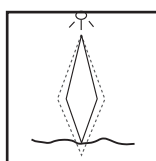
Height deviations are detected by utilising interference patterns formed/arised when two reflected light beams, one from the sample and one from a reference surface, interact. Features down to 1 μm in spatial resolution and sub-nm in height can be detected. The technique is of advantages in

laboratories due to its sensitivity to vibration, but new instruments are coming that can be used for in-line measurements. Typical output are 3D maps and areal surface parameters (e.g. S_a and S_t which correspond to the R_a and R_t respectively). Also other parameter families are available, e.g. areal, volume and functional parameters.

laboratories due to its sensitivity to vibration, but new instruments are coming that can be used for in-line measurements. Typical output are 3D maps and areal surface parameters (e.g. S_a and S_t which correspond to the R_a and R_t respectively). Also other parameter families are available, e.g. areal, volume and functional parameters.



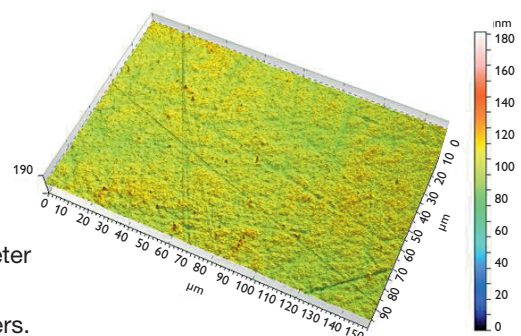
CONFOCAL MICROSCOPE



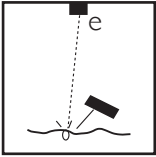
Builds up 3D maps based on stacks of images recorded at different heights, excluding points that are out of focus.

The technique is preferential for surfaces rougher than optical quality.

Typical output are 3D maps and areal surface parameters (e.g. S_a and S_t which correspond to the R_a and R_t respectively). Also other parameter families are available, e.g. areal, volume and functional parameters.

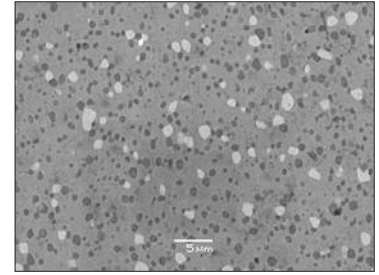


SEM/EDS

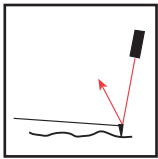


A focused electron beam raster-scans the surface; the energetic electrons interact with the atoms in the sample within a few nm to several μm of the surface, i.e. scattering events take place (primary electrons lose energy

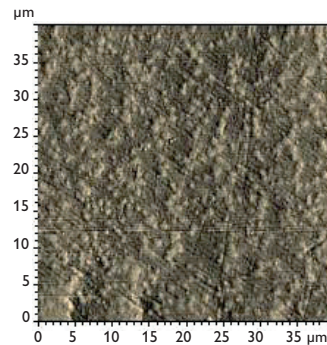
and/or change direction). The emitted electrons are “collected” by different detectors. The EDS, a type of X-ray spectrometer, allows elemental analysis. Typical output are the topographical contrast (based on SE), chemical contrast (based on BSE) and phase composition (based on X-ray).



ATOMIC FORCE MICROSCOPE



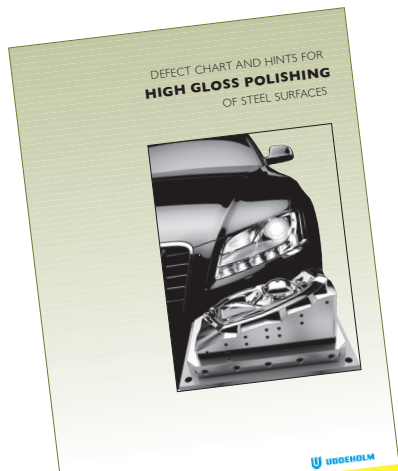
Simply described as a tiny profiler/stylus operating with extremely small probe tips barely touching the surface resulting in 3D resolutions close to atomic level. Typical output are 3D maps and areal surface parameters.



SELECTION OF MEASUREMENT DEVICES AND GENERAL SPECIFICATIONS

GENERAL SPEC./DEVICE	LIGHT OPTICAL MICROSCOPE	STYLUS	INTERFEROMETER	CONFOCAL	SEM/EDS	ATOMIC FORCE MICROSCOPE	GLOSSMETER
Resolution (m)	xy: 10^{-7} z: 10^{-6}	xy: 10^{-6} – 10^{-4} z: 10^{-9}	xy: 10^{-6} z: 10^{-10}	xy: 10^{-6} z: 10^{-7}	xy: 10^{-9} z: 10^{-9}	xy: 10^{-10} z: 10^{-12}	–
Measurement area	μm – mm	μm – cm	μm	μm – mm	μm – mm	μm	μm – mm
Height info	No	No	Yes	Yes	No	Yes	Possible
2D/3D	2D	2D	3D	3D	2D/3D	3D	–
Component analysis		No	No	No	No	Yes	No
Usability	Good	Good	Mid	Mid	Bad	Bad	Good
Measurement time	–	Long	Short	Mid	Long	Long	Short
Size of workpiece	Device dependent	Unlimited	Device dependent (often up to 2–10 kg)	Device dependent (often up to 2–10 kg)	mm–cm	Device dependent	Unlimited
Other	Standardised methods for cleanliness dermination	Risk of surface damage, fragile stylus/pick-up	Sensitive to vibrations	Large depth of focus, problems with artefacts	Work in vacuum, needs solid and conducting samples, ability to image undercuts	Noise sensitive, fragile stylus/pick-up	Only average roughness data

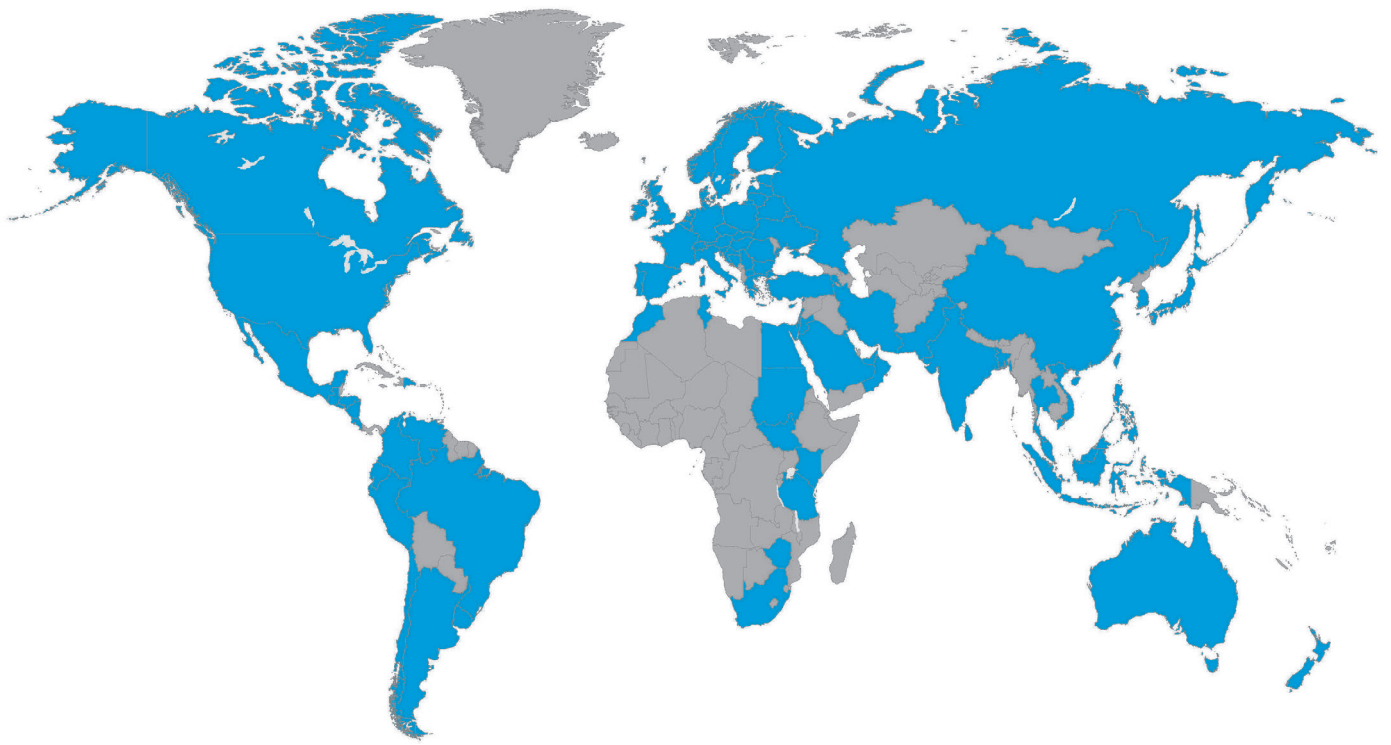
Table 7. The figures shown should only be considered as guidelines.



The most common defects found when polishing are described in the Uddeholm brochure "Defect Chart and Hints for High Gloss Polishing of Steel Surfaces".

UDDEHOLM DEFECT CHART		UDDEHOLM DEFECT CHART		UDDEHOLM DEFECT CHART																			
<p>PITTING Scattered pits, holes dispersed over the majority of the surface.</p> <p>HINTS</p> <ul style="list-style-type: none"> • Shorten the polishing time (use enough for 3000 grit) • Use lower pressure • Use harder non-ferrous combination material and oil additives in suspension • Avoid unidirectional movements during preparation of the surface • Dry the workpiece and clean properly to avoid moisture marks on the surface • If pits appear only sporadically, a local area on the surface is probably due to inclusions in the material 	<p>2D MEASUREMENT AND PROFILE</p>	<p>RELIEF Small depressions in all kind of positions covering the majority of the surface.</p> <p>HINTS</p> <ul style="list-style-type: none"> • Choose a thinner steel in SS2 steel grade • Use harder combination • Choose a more homogeneous steel material. Make sure that the steel is polished after further steps (preparation of surface) • Decrease the polishing time (use enough for 3000 grit) • Polishing with low pressure reduce the risk • Use lower pressure 	<p>2D MEASUREMENT AND PROFILE</p>	<p>DISCOLORATION/STAINING Discoloration areas, e.g. "baldy spots"</p> <p>HINTS</p> <ul style="list-style-type: none"> • Homogeneous microstructure is advised • Clean and dry the workpiece immediately after each preparation step (pre-heat, blast) • Compost at the sample oil or water, avoid spillage on the surface • Cover the surface after polishing and store properly • Avoid contamination during pre-polishing steps which get visible during the polishing process 	<p>2D MEASUREMENT AND PROFILE</p>	<p>COMET TAILS Dispersed lines with a tail, dispersed over the majority of the surface.</p> <p>HINTS</p> <ul style="list-style-type: none"> • Avoid unidirectional movements • Use higher rotation speed if manual polishing 	<p>2D MEASUREMENT AND PROFILE</p>	<p>PEAK-RAISING Small, randomly distributed, flat-topped, irregularly shaped, high peaks.</p> <p>HINTS</p> <ul style="list-style-type: none"> • Choose a thinner steel material • Clean the workpiece to avoid surface contamination • Use lower pressure (higher abrasive size, polishing fluid with higher viscosity or another lubricant with higher viscosity to avoid unidirectional movement) 	<p>2D MEASUREMENT AND PROFILE</p>	<p>HAZE Area with lower gloss than the surrounding ("fuzzy finished appearance")</p> <p>HINTS</p> <ul style="list-style-type: none"> • Choose steel with homogeneous material properties (no unidirectional texture in material) • Right lubricant to produce protection (e.g. the milling or welding operations) • Avoid polishing with directional movement • Homogeneous surface conditions during using lubricant and chemical product 	<p>2D MEASUREMENT AND PROFILE</p>	<p>HOLE Single, regular or circular shaped cavity, e.g. pinholes and irregularly shaped.</p> <p>HINTS</p> <ul style="list-style-type: none"> • Choose a thinner steel in SS2 steel grade • Use harder combination (abrasive and oil) • Higher polishing cloth (reduce the risk for surface) • Use a harder free polishing cloth 	<p>2D MEASUREMENT AND PROFILE</p>	<p>ORANGE PEEL Randomly oriented ridges and hills covering the majority of the surface.</p> <p>HINTS</p> <ul style="list-style-type: none"> • Shorten the polishing time (use enough for 3000 grit) • Use harder combination • Use lower pressure • Increase the lubrication in order to cool down the surface 	<p>2D MEASUREMENT AND PROFILE</p>	<p>BURN MARK Partial discoloration on a too high surface only during surface preparation. On the exposed surface there often occurs the so-called "dark bluish spots" from high pressure during grinding process. Some marks of grinding, welding or other operations.</p> <p>HINTS</p> <ul style="list-style-type: none"> • Use lubrication in order to cool down the surface during surface preparation • Use lower pressure in order to avoid surface preparation 	<p>2D MEASUREMENT AND PROFILE</p>	<p>GROOVE (scratches) Lengthwise recesses with noticeable direction.</p> <p>HINTS</p> <ul style="list-style-type: none"> • Clean the workpiece, avoid any between area polishing (the remaining process should be done in order) • Be sure that marks left from previous preparation stage (e.g. turning or grinding) are removed • Check if the hardness is too low 	<p>2D MEASUREMENT AND PROFILE</p>	<p>WAVINESS Lengthwise oriented ridges and hills covering the majority of the surface.</p> <p>HINTS</p> <ul style="list-style-type: none"> • Work with tools that have good contact on the surface • If necessary, correct the back to the first polishing step and change to a larger sand for the better to the geometry of the surface to be polished 	<p>2D MEASUREMENT AND PROFILE</p>	<p>CRACK Linear recesses with a sharp bottom.</p> <p>HINTS</p> <ul style="list-style-type: none"> • Check back from surface recesses built up during the manufacturing process, including the preparation under the manufacturing process 	<p>2D MEASUREMENT AND PROFILE</p>
<p>COMET TAILS Dispersed lines with a tail, dispersed over the majority of the surface.</p> <p>HINTS</p> <ul style="list-style-type: none"> • Avoid unidirectional movements • Use higher rotation speed if manual polishing 	<p>2D MEASUREMENT AND PROFILE</p>	<p>PEAK-RAISING Small, randomly distributed, flat-topped, irregularly shaped, high peaks.</p> <p>HINTS</p> <ul style="list-style-type: none"> • Choose a thinner steel material • Clean the workpiece to avoid surface contamination • Use lower pressure (higher abrasive size, polishing fluid with higher viscosity or another lubricant with higher viscosity to avoid unidirectional movement) 	<p>2D MEASUREMENT AND PROFILE</p>	<p>HAZE Area with lower gloss than the surrounding ("fuzzy finished appearance")</p> <p>HINTS</p> <ul style="list-style-type: none"> • Choose steel with homogeneous material properties (no unidirectional texture in material) • Right lubricant to produce protection (e.g. the milling or welding operations) • Avoid polishing with directional movement • Homogeneous surface conditions during using lubricant and chemical product 	<p>2D MEASUREMENT AND PROFILE</p>	<p>HOLE Single, regular or circular shaped cavity, e.g. pinholes and irregularly shaped.</p> <p>HINTS</p> <ul style="list-style-type: none"> • Choose a thinner steel in SS2 steel grade • Use harder combination (abrasive and oil) • Higher polishing cloth (reduce the risk for surface) • Use a harder free polishing cloth 	<p>2D MEASUREMENT AND PROFILE</p>	<p>ORANGE PEEL Randomly oriented ridges and hills covering the majority of the surface.</p> <p>HINTS</p> <ul style="list-style-type: none"> • Shorten the polishing time (use enough for 3000 grit) • Use harder combination • Use lower pressure • Increase the lubrication in order to cool down the surface 	<p>2D MEASUREMENT AND PROFILE</p>	<p>BURN MARK Partial discoloration on a too high surface only during surface preparation. On the exposed surface there often occurs the so-called "dark bluish spots" from high pressure during grinding process. Some marks of grinding, welding or other operations.</p> <p>HINTS</p> <ul style="list-style-type: none"> • Use lubrication in order to cool down the surface during surface preparation • Use lower pressure in order to avoid surface preparation 	<p>2D MEASUREMENT AND PROFILE</p>	<p>GROOVE (scratches) Lengthwise recesses with noticeable direction.</p> <p>HINTS</p> <ul style="list-style-type: none"> • Clean the workpiece, avoid any between area polishing (the remaining process should be done in order) • Be sure that marks left from previous preparation stage (e.g. turning or grinding) are removed • Check if the hardness is too low 	<p>2D MEASUREMENT AND PROFILE</p>	<p>WAVINESS Lengthwise oriented ridges and hills covering the majority of the surface.</p> <p>HINTS</p> <ul style="list-style-type: none"> • Work with tools that have good contact on the surface • If necessary, correct the back to the first polishing step and change to a larger sand for the better to the geometry of the surface to be polished 	<p>2D MEASUREMENT AND PROFILE</p>	<p>CRACK Linear recesses with a sharp bottom.</p> <p>HINTS</p> <ul style="list-style-type: none"> • Check back from surface recesses built up during the manufacturing process, including the preparation under the manufacturing process 	<p>2D MEASUREMENT AND PROFILE</p>						
<p>HOLE Single, regular or circular shaped cavity, e.g. pinholes and irregularly shaped.</p> <p>HINTS</p> <ul style="list-style-type: none"> • Choose a thinner steel in SS2 steel grade • Use harder combination (abrasive and oil) • Higher polishing cloth (reduce the risk for surface) • Use a harder free polishing cloth 	<p>2D MEASUREMENT AND PROFILE</p>	<p>ORANGE PEEL Randomly oriented ridges and hills covering the majority of the surface.</p> <p>HINTS</p> <ul style="list-style-type: none"> • Shorten the polishing time (use enough for 3000 grit) • Use harder combination • Use lower pressure • Increase the lubrication in order to cool down the surface 	<p>2D MEASUREMENT AND PROFILE</p>	<p>BURN MARK Partial discoloration on a too high surface only during surface preparation. On the exposed surface there often occurs the so-called "dark bluish spots" from high pressure during grinding process. Some marks of grinding, welding or other operations.</p> <p>HINTS</p> <ul style="list-style-type: none"> • Use lubrication in order to cool down the surface during surface preparation • Use lower pressure in order to avoid surface preparation 	<p>2D MEASUREMENT AND PROFILE</p>	<p>GROOVE (scratches) Lengthwise recesses with noticeable direction.</p> <p>HINTS</p> <ul style="list-style-type: none"> • Clean the workpiece, avoid any between area polishing (the remaining process should be done in order) • Be sure that marks left from previous preparation stage (e.g. turning or grinding) are removed • Check if the hardness is too low 	<p>2D MEASUREMENT AND PROFILE</p>	<p>WAVINESS Lengthwise oriented ridges and hills covering the majority of the surface.</p> <p>HINTS</p> <ul style="list-style-type: none"> • Work with tools that have good contact on the surface • If necessary, correct the back to the first polishing step and change to a larger sand for the better to the geometry of the surface to be polished 	<p>2D MEASUREMENT AND PROFILE</p>	<p>CRACK Linear recesses with a sharp bottom.</p> <p>HINTS</p> <ul style="list-style-type: none"> • Check back from surface recesses built up during the manufacturing process, including the preparation under the manufacturing process 	<p>2D MEASUREMENT AND PROFILE</p>												
<p>GROOVE (scratches) Lengthwise recesses with noticeable direction.</p> <p>HINTS</p> <ul style="list-style-type: none"> • Clean the workpiece, avoid any between area polishing (the remaining process should be done in order) • Be sure that marks left from previous preparation stage (e.g. turning or grinding) are removed • Check if the hardness is too low 	<p>2D MEASUREMENT AND PROFILE</p>	<p>WAVINESS Lengthwise oriented ridges and hills covering the majority of the surface.</p> <p>HINTS</p> <ul style="list-style-type: none"> • Work with tools that have good contact on the surface • If necessary, correct the back to the first polishing step and change to a larger sand for the better to the geometry of the surface to be polished 	<p>2D MEASUREMENT AND PROFILE</p>	<p>CRACK Linear recesses with a sharp bottom.</p> <p>HINTS</p> <ul style="list-style-type: none"> • Check back from surface recesses built up during the manufacturing process, including the preparation under the manufacturing process 	<p>2D MEASUREMENT AND PROFILE</p>																		

This brochure and the related brochure *Defect Chart and Hints for High Gloss Polishing of Steel Surfaces* have been produced in co-operation with the Functional Surfaces Research Group at Halmstad University in Sweden.



NETWORK OF EXCELLENCE

Uddeholm is present on every continent. This ensures you high-quality Swedish tool steel and local support wherever you are. Our goal is clear – to be your number one partner and tool steel provider.

Uddeholm is the world's leading supplier of tooling materials. This is a position we have reached by improving our customers' everyday business. Long tradition combined with research and product development equips Uddeholm to solve any tooling problem that may arise. It is a challenging process, but the goal is clear – to be your number one partner and tool steel provider.

Our presence on every continent guarantees you the same high quality wherever you are. We act worldwide. For us it is all a matter of trust – in long-term partnerships as well as in developing new products.

For more information, please visit www.uddeholm.com